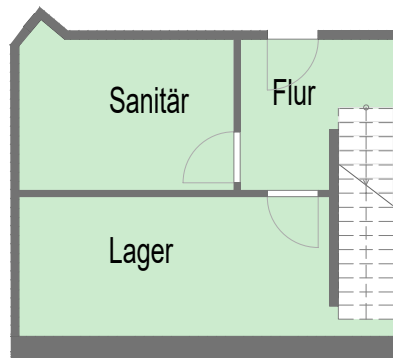
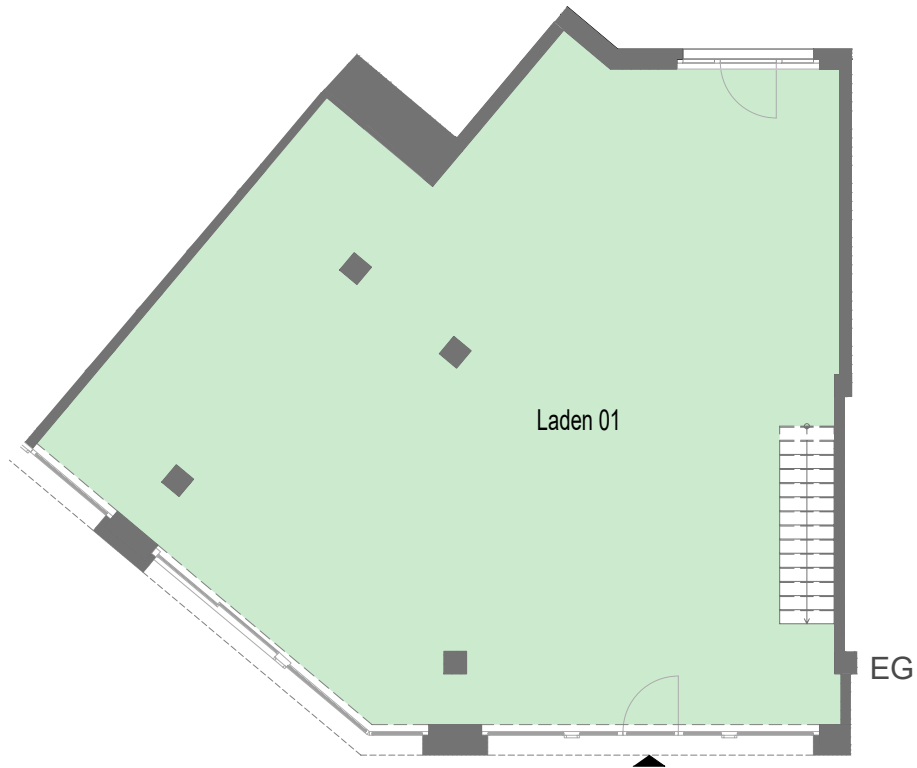




# KRYSTALLPALAST AREAL

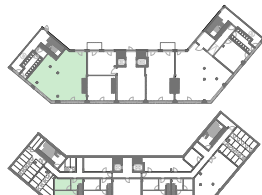


UG



### Bauteil 3, Einheit 01, Lage UG/EG

EG	161,32 m <sup>2</sup>
UG	42,24 m <sup>2</sup>
Gesamt	203,56 m <sup>2</sup>



Rosa-Luxemburg-Straße, Leipzig  
BT 3,  
UG EG links  
GE 1



QUARTERBACK IMMOBILIEN AG.

Quarterback Immobilien AG, Käthe - Kollwitz - Straße 21, 04109 Leipzig

