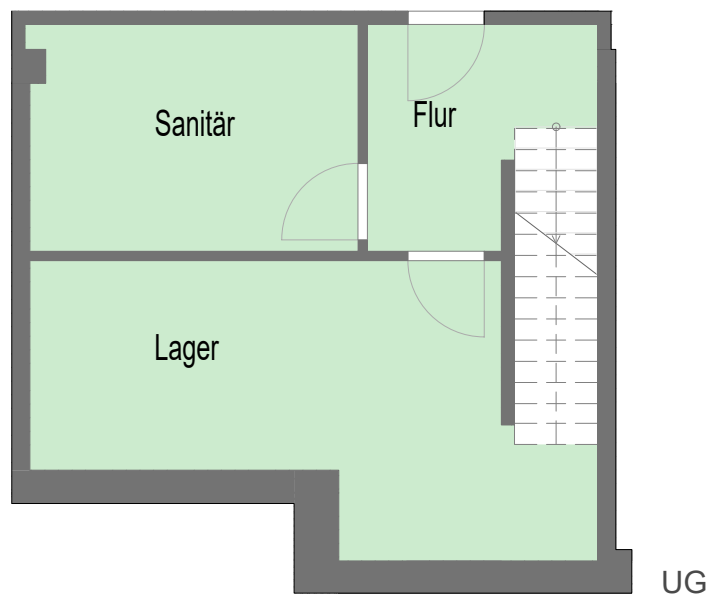
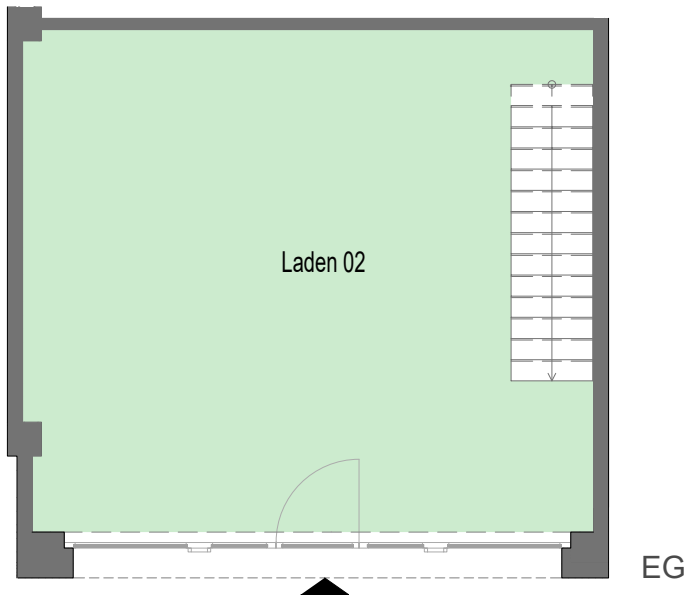




KRYSTALLPALAST AREAL

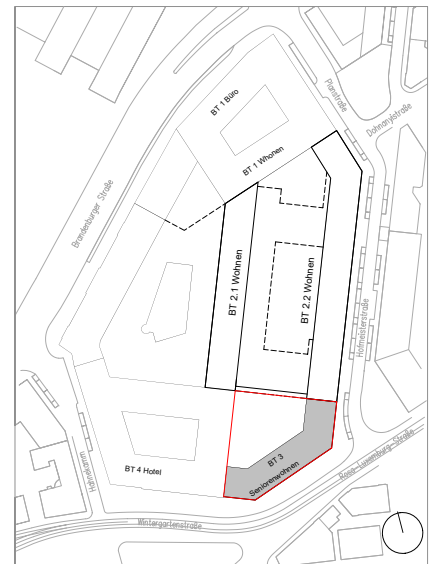


Bauteil 3, Einheit 02, Lage UG/EG

EG	50,72 m ²
UG	46,54 m ²
Gesamt	97,26 m ²



Rosa-Luxemburg-Straße, Leipzig
BT 3,
UG EG links
GE 2



QUARTERBACK IMMOBILIEN AG.

Quarterback Immobilien AG, Käthe - Kollwitz - Straße 21, 04109 Leipzig