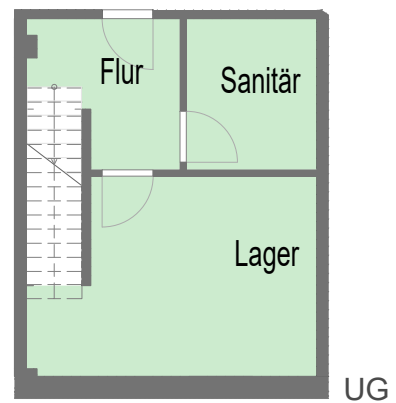
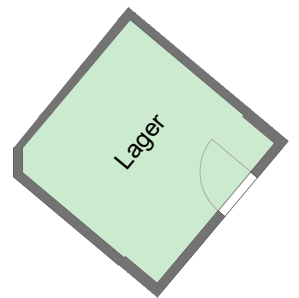
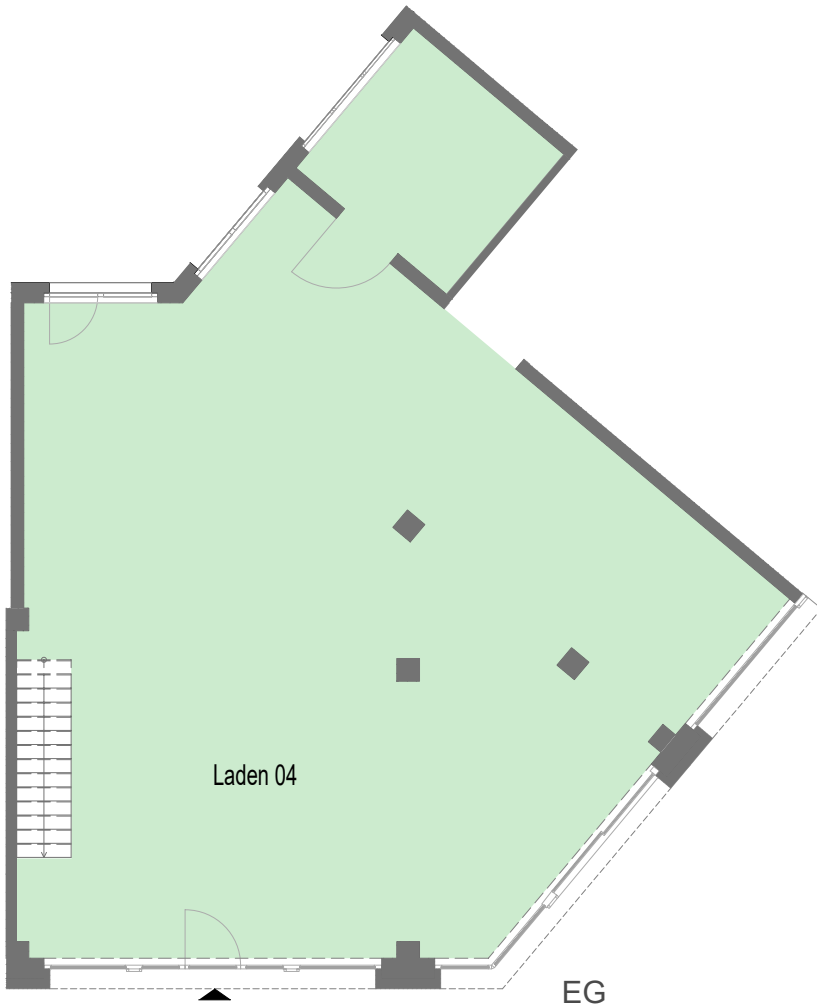




KRYSTALLPALAST AREAL



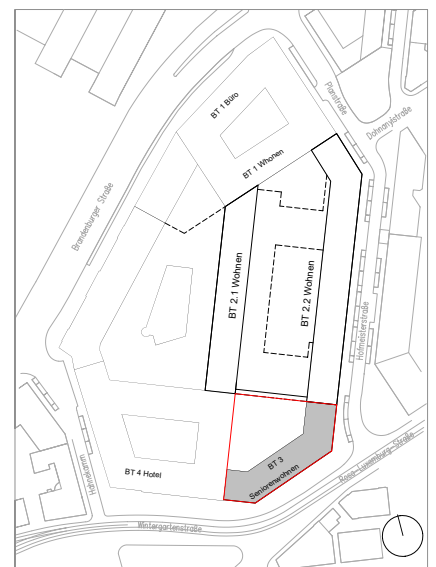
Bauteil 3, Einheit 04, Lage UG/EG

EG	178,78 m ²
UG	53,03 m ²
Gesamt	231,81 m ²



Rosa-Luxemburg-Straße, Leipzig

BT3,
UG EG rechts
GE 4



QUARTERBACK IMMOBILIEN AG.

Quarterback Immobilien AG, Käthe - Kollwitz - Straße 21, 04109 Leipzig