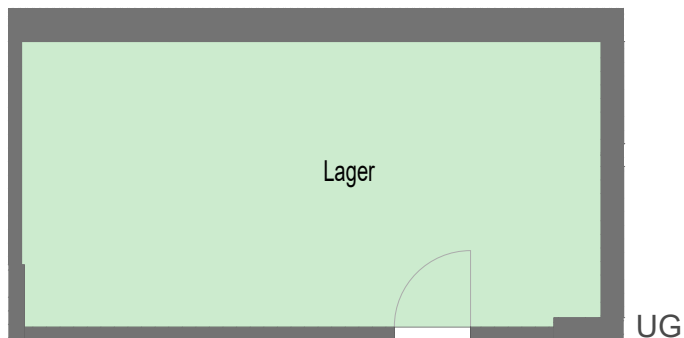
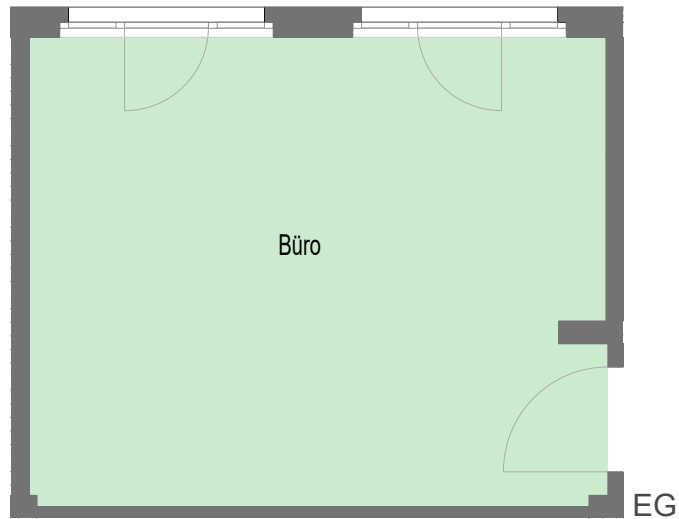


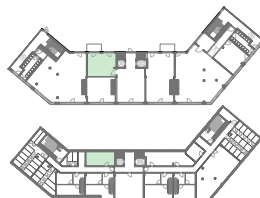


KRYSTALLPALAST AREAL



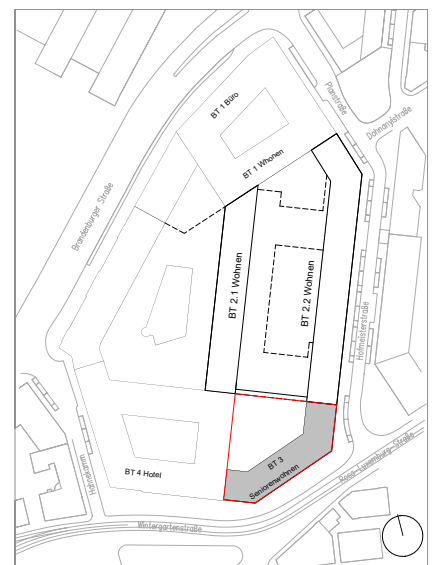
Bauteil 3, Einheit 05, Lage UG/EG

EG	47,13 m ²
UG	28,82 m ²
Gesamt	75,95 m²



Rosa-Luxemburg-Straße, Leipzig

BT3,
UG EG links
GE 5



QUARTERBACK IMMOBILIEN AG.

Quarterback Immobilien AG, Käthe - Kollwitz - Straße 21, 04109 Leipzig